



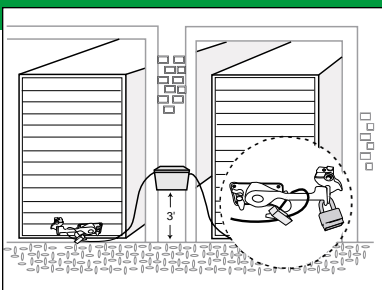
Dual Trailer Alarm Recoiler



SK-99-970
Dual Trailer Alarm
Assembly with (2) Trailer Alarm Recoilers

■ Each Unit
Protects Up
To 2 Storage
or Overnight
Trailers

- Connects To Building Alarm System
- Recoilers Utilize Armored Cables
- Easy Installation
- 10 Ft. Cable Retracts When Not In Use
- Replacable Armored Cable Recoilers

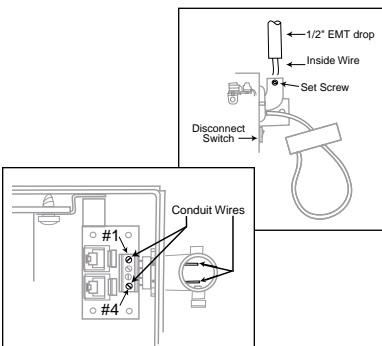


The **Dual Trailer Alarm Recoiler** mounts on the inside between two dock doors to protect up to (2) two trailers. Each unit comes with a 90° EMT Conduit Connector Elbow to allow you to install it to the building security system via 1/2" EMT Conduit. Installation and wiring is simple, and should be completed in minimal time.

When a trailer is backed into the dock and requires protection, dock personnel can pull the recoiler lasso out from the Trailer Alarm Recoiler, lasso the trailer latch and padlock it. The dock doors can then be lowered down, capturing the armored Trailer Alarm cable underneath the door.

If the cable is cut or the trailer is moved disconnecting the cable, the building alarm will be activated. The Trailer Alarm Recoiler cable is designed to break off in the event of a drive off, and is easily replaced. Simply unscrew the Trailer Alarm lid, remove the damaged SK-99-975 Trailer Alarm Replacement Recoiler Assembly, and slide in a replacement unit.

Call your Se-Kure Controls Regional Sales Manager or Customer Service Representative for additional information.



Se-Kure Controls,® Inc.

On the Web: www.sekure.com
E-Mail: info@se-kure.com

3714 Runge Street • Franklin Park, IL 60131 • 1-(800) 322-2435 • (847) 288-1111 • Fax: (847) 288-9999